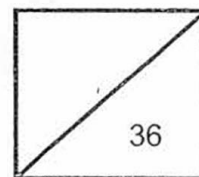


Semestral Examination 1 for 2017
SCIENCE
Primary 3

Total
Marks:



Name: _____

Class: Pr 3 _____

Register No. _____

Duration: 1 h 30 min

Date: 9 May 2017

Parent's Signature: _____

BOOKLET A

Instructions to Pupils:

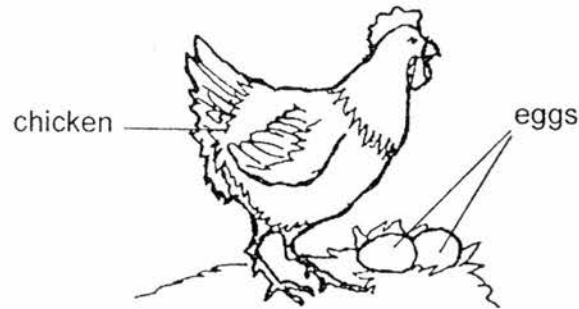
1. Do not open the booklets until you are told to do so.
2. Follow all instructions carefully.
3. This paper consists of 2 booklets, Booklet A and Booklet B.
4. For questions 1 to 18 in Booklet A, shade the correct ovals on the Optical Answer Sheet (OAS) provided using a 2B pencil.
5. For questions 19 to 27, give your answers in the spaces given in Booklet B.

* This booklet consists of 11 printed pages (including cover page).

Booklet A (34 marks)

For each question from 1 to 18, four options are given. One of them is the correct answer. Make your choice (1, 2, 3 or 4) and shade the correct oval (1, 2, 3 or 4) on the Optical Answer Sheet (OAS).

1. A chicken had laid some eggs.



Which characteristic of living things was observed?

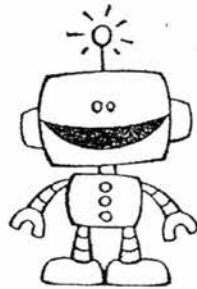
- (1) Living things grow.
 - (2) Living things reproduce.
 - (3) Living things respond to changes around them.
 - (4) Living things need air, food and water to stay alive.
2. Four students made the following statements about the characteristics of all living things.

Ali: Respond to changes.
Bala: Feed on other animals.
Cathy: Move from place to place.
Didi: Reproduce by giving birth to young alive.

Who has made the correct statement about the characteristics of all living things?

- (1) Ali
- (2) Bala
- (3) Cathy
- (4) Didi

3. Tina compared the differences between a toy robot and her baby brother.



Toy robot

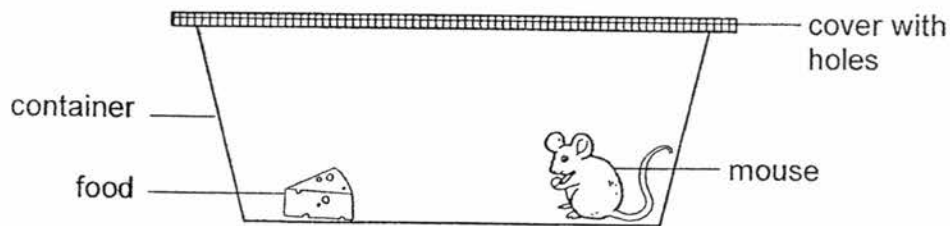


Baby brother

Which one of the following shows the correct comparison?

	Toy robot	Baby brother
(1)	Cannot grow taller	Can grow taller
(2)	Respond to changes	Does not respond to changes
(3)	Can move	Cannot move
(4)	Needs water, food and air to survive	Does not need water, food and air to survive

4. Susan put a mouse in a container. The container was placed near a window. She covered the container with a cover that has holes as shown below.



She fed the mouse every day. After one week, the mouse was dead.

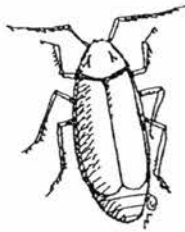
Based on the above information, which one of the following is most likely to be the reason why the mouse was dead?

- (1) There was no water.
- (2) There was not enough sunlight.
- (3) There was not enough air in the tank.
- (4) There was not enough room for the mouse to move about.

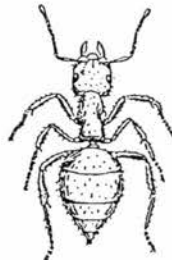
5. A bird and a human are similar because they _____.

- (1) lay eggs
- (2) have hair
- (3) have feathers
- (4) have two legs

6. The diagram below shows animal P and Q.



Animal P

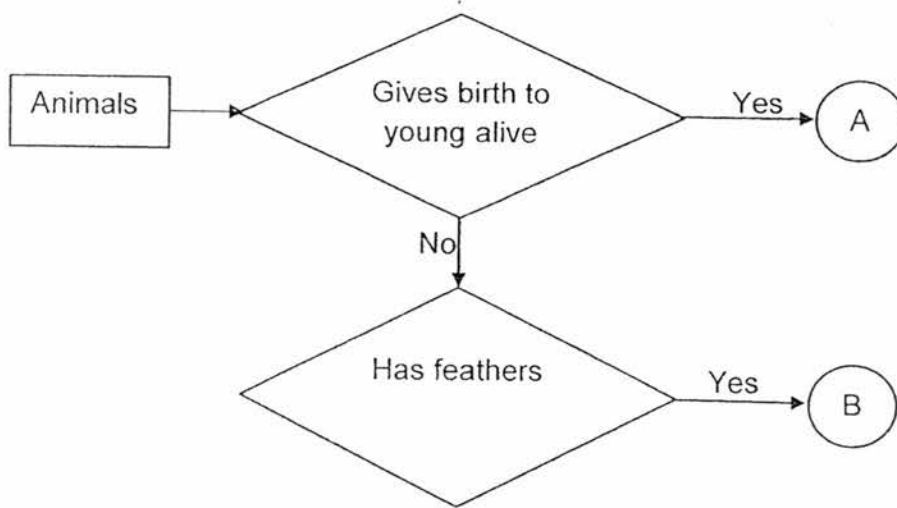


Animal Q

Based on your observation of P and Q, which one of the following statements is correct?

- (1) Both P and Q lay eggs.
- (2) P can fly but Q cannot fly.
- (3) Both P and Q have six legs.
- (4) P has feelers but Q does not have feelers.

Study the flowchart and answer questions 7 and 8.



7. Which animal group could Animal B belong to?

- | | |
|------------|------------|
| (1) Bird | (2) Fish |
| (3) Insect | (4) Mammal |

8. Animal A will most likely have _____ as their outer covering.

- | | |
|----------------|------------------|
| (1) hair | (2) shell |
| (3) dry scales | (4) moist scales |

9. David found a living thing.
His friends made the following statements about the living things.

Andrew: It makes its own food.

Belinda: It reproduces by spores.

Cathy: It has leaves and flowers.

Davin: It needs air, food and water to survive.

Whose statements can be used to classify the living thing as a plant?

- | | |
|------------|-------------|
| (1) Andrew | (2) Belinda |
| (3) Cathy | (4) Davin |

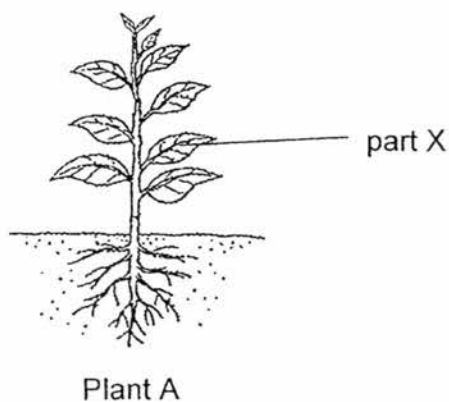
10. John carried out an experiment to find out the different conditions needed for a plant to survive. The observations were recorded in the table below.

Set-up	Air	Water	Sunlight	Observation after a month
A	√	√	√	Plant is still alive.
B	√		√	Plant died.
C		√	√	Plant died.
D	√	√		Plant died.

Based on the table, what do plants need to survive?

- (1) Air and water only.
- (2) Air and sunlight only.
- (3) Air, water and sunlight.
- (4) Water and sunlight only.

11. The diagram below shows Plant A.



What is the name of part X?

- (1) roots
- (2) stem
- (3) flower
- (4) leaf

12. Samuel studied 2 plants W and X. He recorded the characteristics as shown in the table below.



A tick (\checkmark) in the box indicates the presence of the certain characteristic.

Characteristics	Plant	
	W	X
Found on land	\checkmark	\checkmark
Has spores		\checkmark
Bears flowers	\checkmark	

Samuel wanted to put plants W and X into 2 groups. What are the suitable headings for plants, W and X?

	Plant W	Plant X
(1)	Land plants	Water plants
(2)	Can reproduce	Cannot reproduce
(3)	Reproduce by seeds	Reproduce by spores
(4)	Non-flowering plants	Flowering plants

13. Cindy added different amount of water on two similar pieces of bread A and B. She then observed the amount of bread mould growing on the bread after 8 days and recorded her observations in the table below.

	Bread A	Bread B
Amount of water added to the bread (ml)	0	10
Amount of bread mould observed after 8 days		

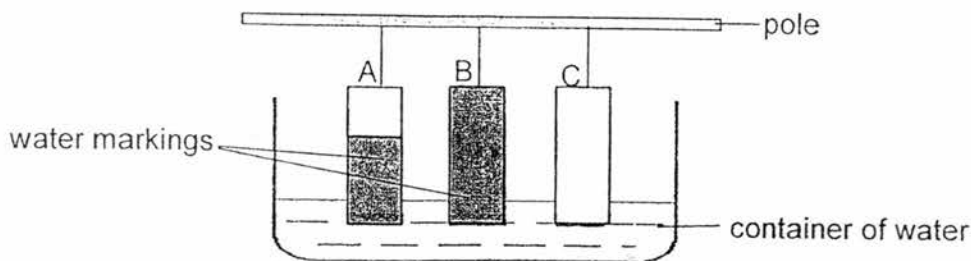
Cindy made the following statements based on her observations. Which one of the statements below is correct?

- (1) Bread mould grows better in the dark.
- (2) Bread mould grows better in the presence of light.
- (3) Bread mould grows better when there is more water.
- (4) Bread mould grows better on Bread A than on Bread B.

14. Which one of the following correctly shows the characteristics used to classify fern and fungi?

	Fern	Fungi
(1)	It has flowers.	It has no flowers.
(2)	It feeds on dead animals.	It feeds on dead plants.
(3)	It reproduces from seeds.	It reproduces by spores.
(4)	It needs sunlight to grow.	It does not need sunlight to grow.

15. Jiawei hung three different strips of materials A, B and C in a large container of water. All the strips were of equal length. The diagram below shows the water markings on each piece of material after a short while.



Which property of material did Jiawei test?

- | | |
|------------------|-----------------|
| (1) Strength | (2) Flexibility |
| (3) Transparency | (4) Waterproof |
16. Which direction does a freely-turning magnet come to rest?
- | | |
|-----------------|----------------|
| (1) North-South | (2) East-West |
| (3) North-East | (4) South-West |

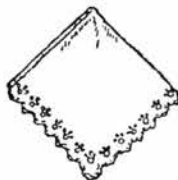
17. Zul investigated the properties of the following objects shown below.



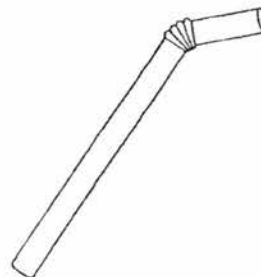
iron nail



metal paper clip



fabric cloth



plastic straw

He made the following observations about one of the objects.

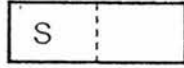
- It can float in water.
- It can be bent easily.
- It does not absorb water.
- It can be cut easily with a pair of scissors.

Which one of the object was Zul's observations based on?

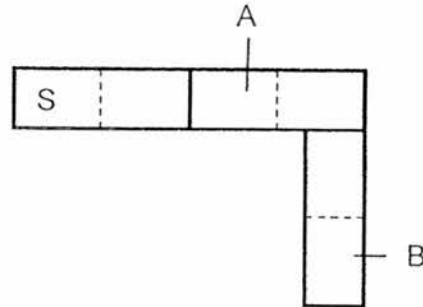
- (1) iron nail
(3) fabric cloth

- (2) metal paper clip
(4) plastic straw

18. Anna had a bar magnet with the South Pole, S, marked as shown below.



She was given another two bar magnets and she arranged all three magnets as shown in the diagram below.



Which of the following are poles A and B?

	Pole A	Pole B
(1)	North	North
(2)	South	South
(3)	North	South
(4)	South	North

END OF BOOKLET A

Semestral Examination 1 for 2017
SCIENCE
Primary 3

Name: _____

Class: Pr 3 _____ Register No. _____ Duration: 1 h 30 min

Date: 9 May 2017 Parent's Signature: _____

BOOKLET B

Instructions to Pupils:

1. For questions 19 to 27, give your answers in the spaces given in this Booklet B.

	Maximum	Marks Obtained
Booklet A	36 marks	
Booklet B	26 marks	
Total	62 marks	

* This booklet consists of 8 printed pages (including cover page).

This paper is not to be reproduced in part or whole without the permission of the Principal.

Booklet B (26 marks)

For questions 19 to 27, write your answers in this booklet.

19. Yusoff bought a bird and kept it in a cage.



- (a) What are two things that Yusoff need to put in the cage to ensure that the bird stays alive? [1]

(i) _____

(ii) _____

- (b) When Yusoff tried to put the two things into the cage, the bird was afraid and tried to fly away from him.

State one characteristic of living things that the bird was showing? [1]

20. Weiling measured the heights of two organisms for three months. She recorded the results in the table shown below.

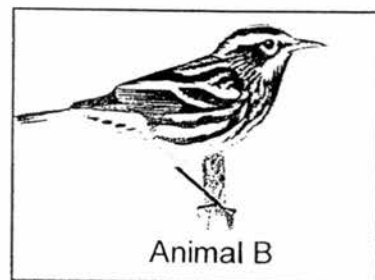
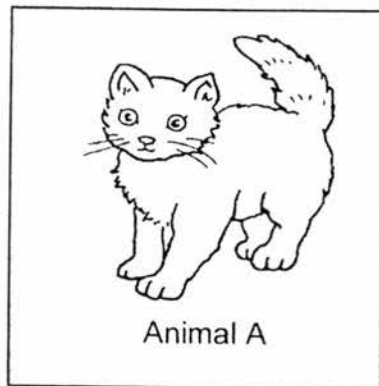
	Organism A	Organism B
Week	Height (cm)	Height (cm)
1	11	10
2	11	12
3	11	15

- (a) State whether each of the following statement is "True", "False" or "Not possible to tell". Put a tick (✓) in the boxes below. [3]

	Statement	True	False	Not possible to tell
(i)	Organism B is a fish.			
(ii)	Organism A is lighter than organism B.			
(iii)	Organism B grew taller but organism A did not.			

21a. Match Animal A and B to the correct animal group.

[1]



- Bird
- Mammal
- Amphibian

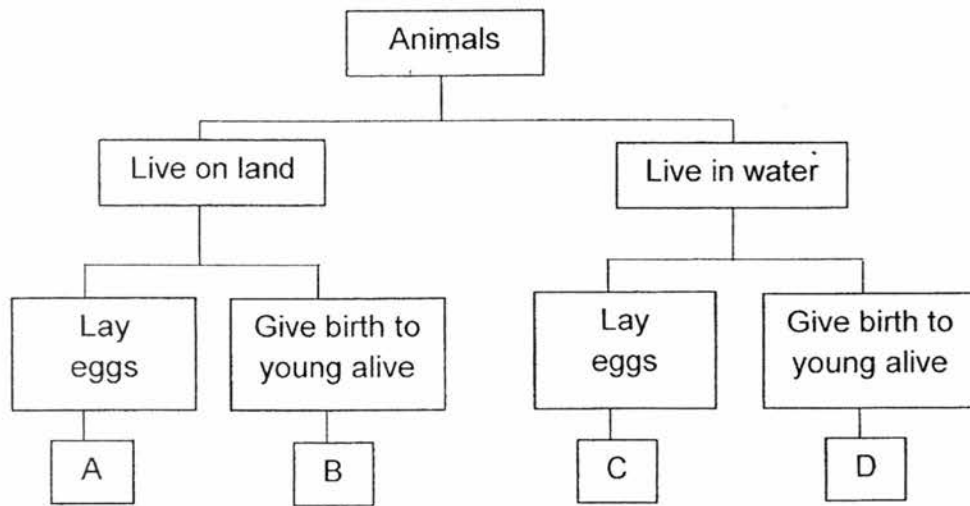
(b) Based on your observation, give a reason for each of your choice in (a).

[2]

Animal A: _____

Animal B: _____

22. Study the classification chart carefully.



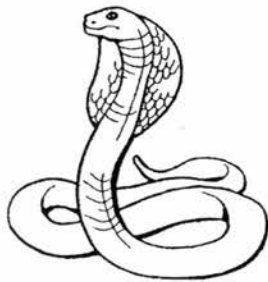
- (a) Based on the information given in the chart above, describe the characteristics of animal D. [1]

- (b) State the animal group that animal B belongs to. [1]

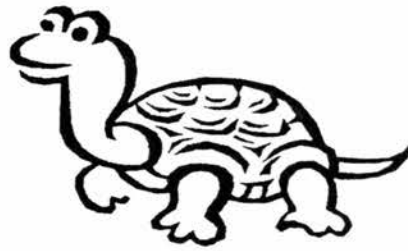
- (c) Based on the information given in the chart above, state one difference between animal B and C. [1]

- (d) Is it possible to group animal A and C in the same group? Explain why. [1]

23. Both Animal S and T are grouped as reptiles.



Animal S



Animal T

(a) State two characteristics of reptiles. [2]

(i) _____

(ii) _____

(b) State a difference between Animal S and Animal T. [1]

24. The diagram below shows a mushroom.

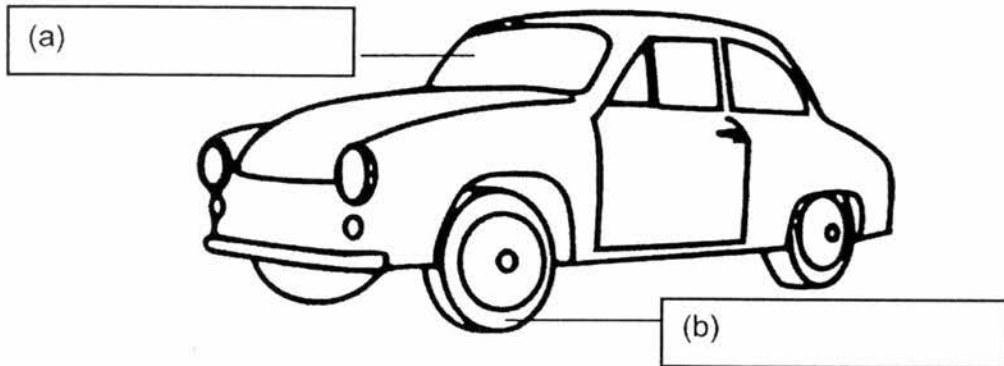


(a) How does a mushroom reproduce? [1]

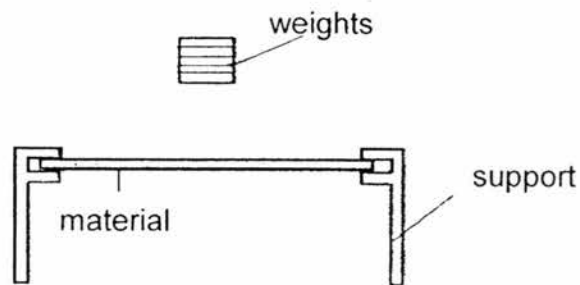
(b) Why is mushroom considered as a fungi and not as non - flowering plant? [1]

25. Mr Lee just bought a car. It is made up of many materials. Choose the best material from the box below to indicate what each part of the car is made up of. [2]

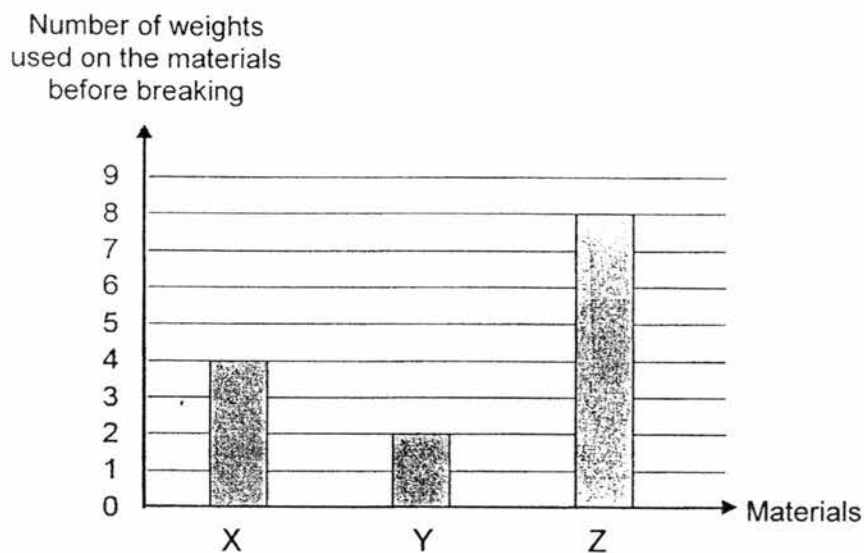
fabric, glass, rubber, metal



26. An experiment was conducted to test the strength of three different materials, X, Y and Z. Weights were released from the same height onto each material as shown below.



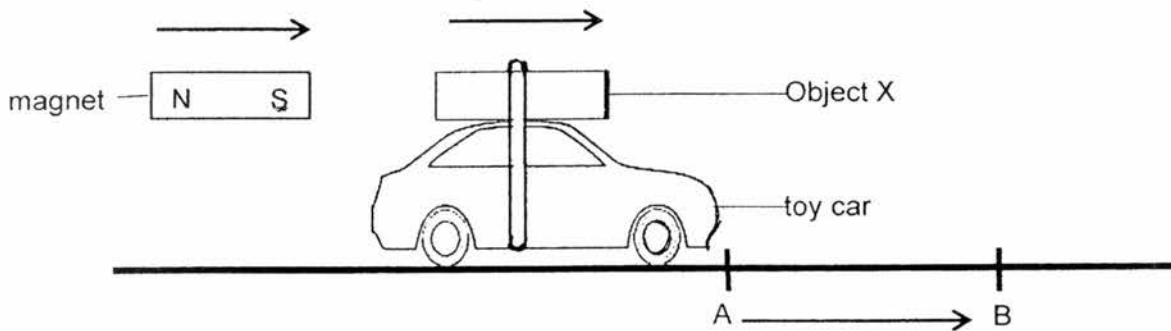
The minimum number of weights used before each material broke was recorded in the graph below.



- (a) Based on the result above, which one of the material (X, Y, or Z) is the weakest? [1]

- (b) Based on the result above, which one of the material (X, Y, or Z) is the most suitable material to make a door? Give a reason to support your answer. [2]

27. Peifen placed Object X on top of the plastic toy car as shown below. When she placed a magnet near the plastic toy car, the plastic toy car began to move from position A to position B.



- (a) Based on Peifen's observation, what is Object X likely to be? [1]

- (b) Explain why the toy car moved from position A to position B when Peifen placed the magnet near it. [1]

- (c) What will happen to the toy car when Peifen turned the magnet so that pole N is facing the toy car? Explain why. [2]

End of paper

ANSWER KEY

YEAR : 2017
 LEVEL : PRIMARY 3
 SCHOOL : ROSYTH
 SUBJECT : SCIENCE
 TERM : SA1

Booklet A

Q1	Q2	Q3	Q4	Q5	Q6	Q7	Q8	Q9
2	1	1	1	4	3	1	1	1
Q10	Q11	Q12	Q13	Q14	Q15	Q16	Q17	Q18
3	4	3	3	4	4	1	4	4

Booklet B

19	(a)	(i) food (ii) water	
	(b)	Living things respond to changes.	
20	(i)	✓ Not possible to tell	
	(a) (ii)	✓ Not possible to tell	
	(iii)	✓ True	
21	(a)	Animal A • Bird Animal B • Mammal	
	(b)	Animal A: It has hair as its outer covering. Animal B: It has feathers as its outer covering.	

22	(a)	It lives in water and gives birth to young alive.
	(b)	Mammals
	(c)	Animal B lives on land while animal C lives in water.
	(d)	Yes, both A and C lay eggs.
23	(a)	(i) Dry skin covered with scales (ii) Cold-blooded
	(b)	Animal T has a shell while animal S does not.
24	(a)	It reproduces by spores.
	(b)	It does not make its own food.
25	(a)	glass
	(b)	rubber
26	(a)	Y is the weakest.
	(b)	Z has the highest number of weights dropped before it breaks.
27	(a)	It is likely to be a magnet.
	(b)	The magnets repelled because they were like poles.
	(c)	They will attract because unlike poles attract.

End